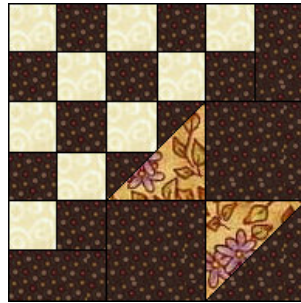
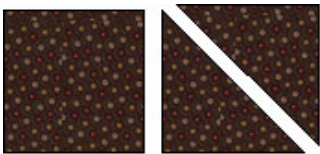


The Golden Thimble

<http://www.thegoldenthimble.com>



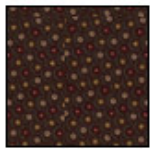
Steps to the Altar
12" Finished Block



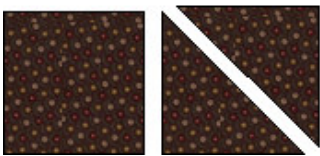
Cut one square that is $4 \frac{7}{8}$ " and then subcut this into 2 triangles. You will only be using 1 of these triangles.



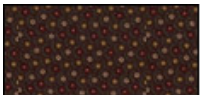
Cut one square that is $4 \frac{7}{8}$ " and then subcut this into 2 triangles.



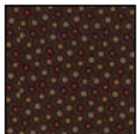
Cut 2 squares that are $4 \frac{1}{2}$ "



Cut one square that is $2 \frac{7}{8}$ " and then subcut this into 2 triangles.



Cut 2 rectangles that are $2 \frac{1}{2}$ " by $4 \frac{1}{2}$ "



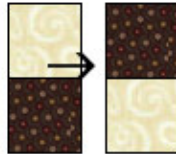
Cut 8 squares that are $2 \frac{1}{2}$ "



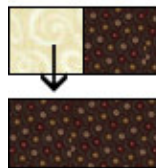
Cut 9 squares that are $2 \frac{1}{2}$ "



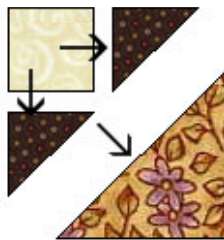
Using a 1/4" seam allowance sew 8 dark squares to 8 cream squares and press towards the dark side.



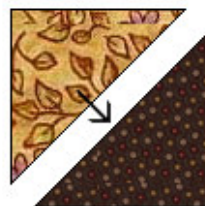
Using a 1/4" seam allowance sew 6 of the two patch together using the picture as a guide. You will be making a total of 3 four patch units.



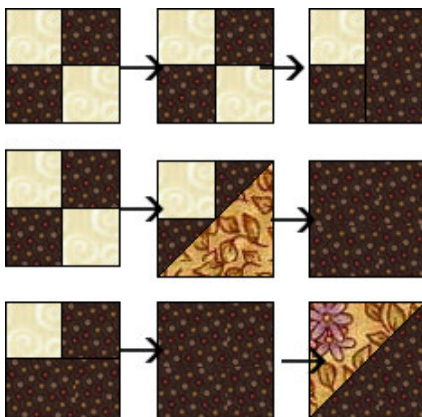
Using a 1/4" seam allowance sew the remaining two, 2 patch units to the dark rectangles. Press towards the dark side. You will make a total of 2 units



Using a 1/4" seam allowance sew the dark triangles to the cream square as shown. Then sew the floral triangle to the unit



Using a 1/4" seam allowance sew the dark triangles to the cream triangle as shown.



Lay out the units that you just made together in rows using the picture as a guide and sew using a 1/4" seam allowance.

Then sew the rows together and press

