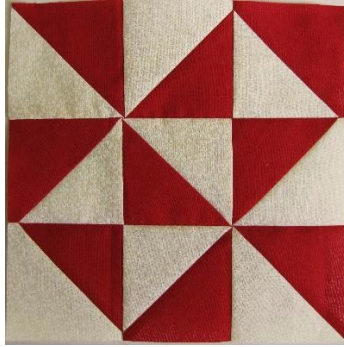


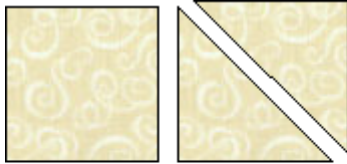
The Golden Thimble

<http://www.thegoldenthimble.com>



Puzzle

9" Finished Block



Cut 5 squares that are $3 \frac{7}{8}$ " , then subcut these into 10 triangles. You will only be using 9 of the triangles for this block



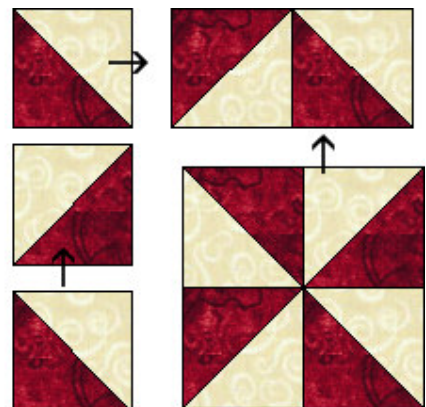
Cut 5 squares that are $3 \frac{7}{8}$ " , then subcut these into 10 triangles. You will only be using 9 of the triangles for this block

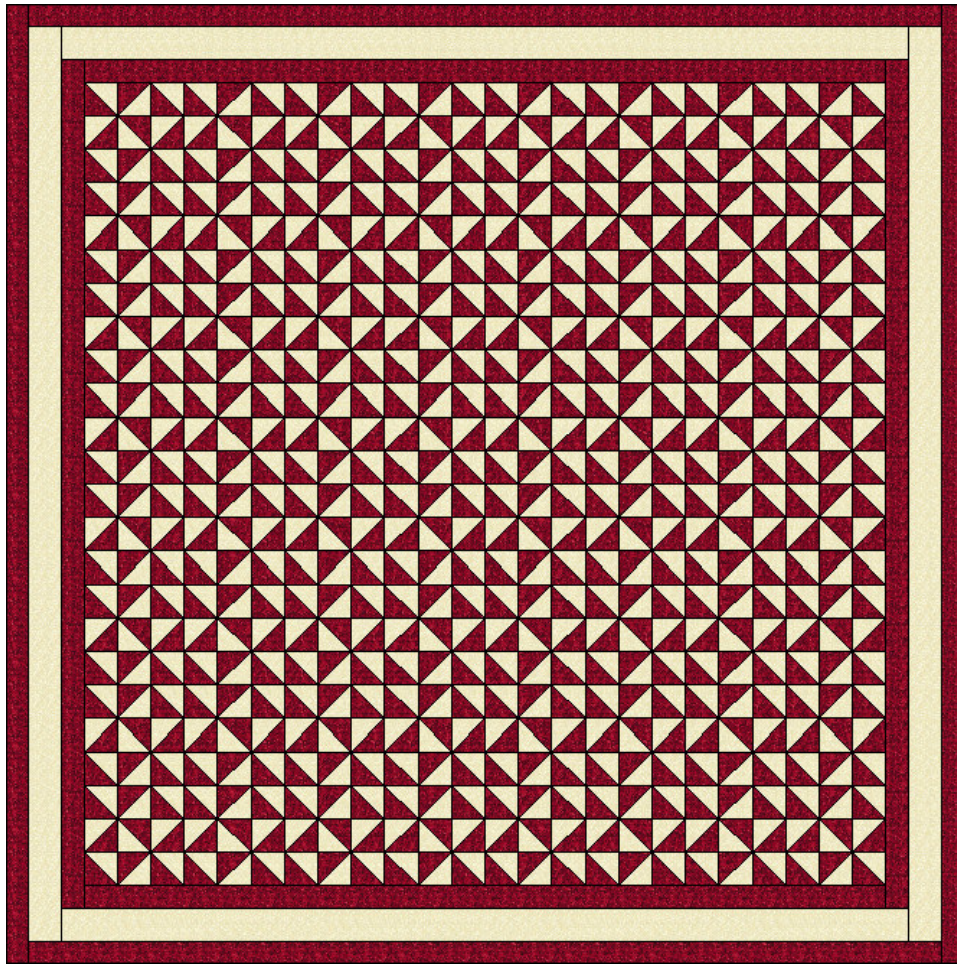


Using a 1/4 inch seam allowance sew the 18 triangles together as shown making a total of 9 red and white units.

Sew the block together using the picture as your guide.

Your block should now measure $9 \frac{1}{2}$ " Unfinished





Puzzle Quilt

86" by 86"

There are 72 copies of this block in this quilt

4 yards of red

4 ½ yards of cream

¾ yard fabric for binding color of choice

7 ¼ yards fabric for backing

Queen Size batting

Inside and Outside Borders that are 2" each vertical straight

1 middle border that is 3" and is vertical straight

For Binding cut 10 strips that are 2 ½" by width of fabric for a 1" finished binding