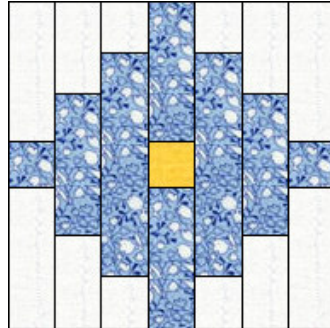


The Golden Thimble

<http://www.thegoldenthimble.com>

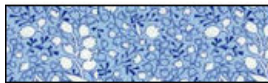


Granny's Flower Garden

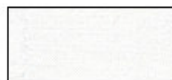
14" Finished Block



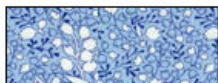
Cut 4 rectangles that are 2 1/2" by 2 3/4"



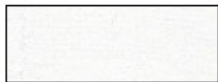
Cut 2 rectangles that are 2 1/2" by 10"



Cut 4 rectangles that are 2 1/2" by 4 1/2"



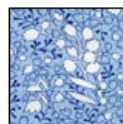
Cut 4 rectangles that are 2 1/2" by 6 1/2"



Cut 4 rectangles that are 2 1/2" by 6 1/2"



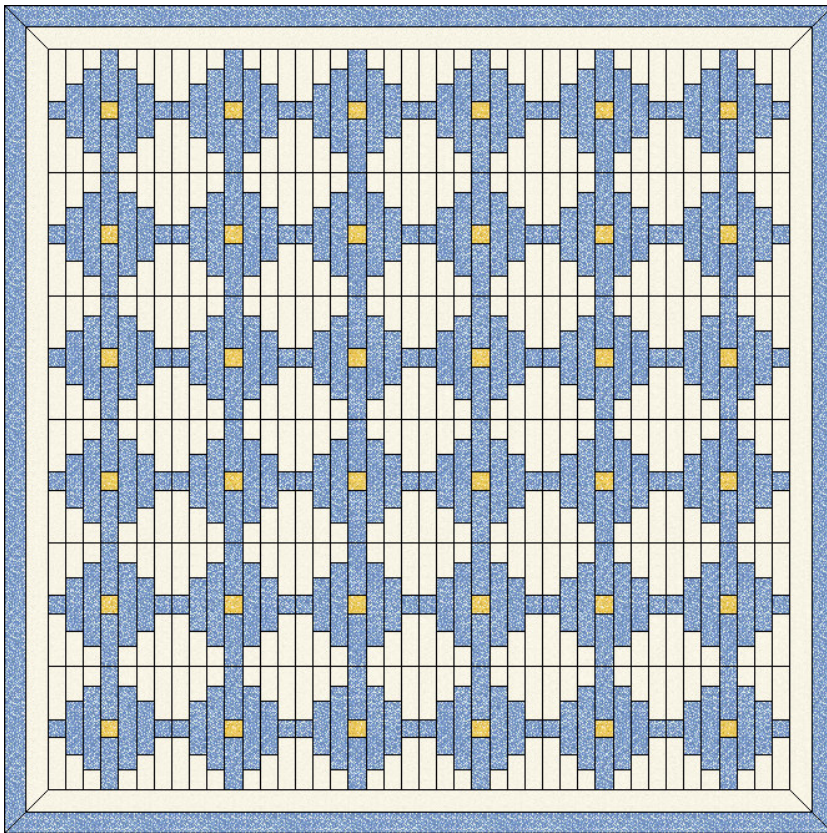
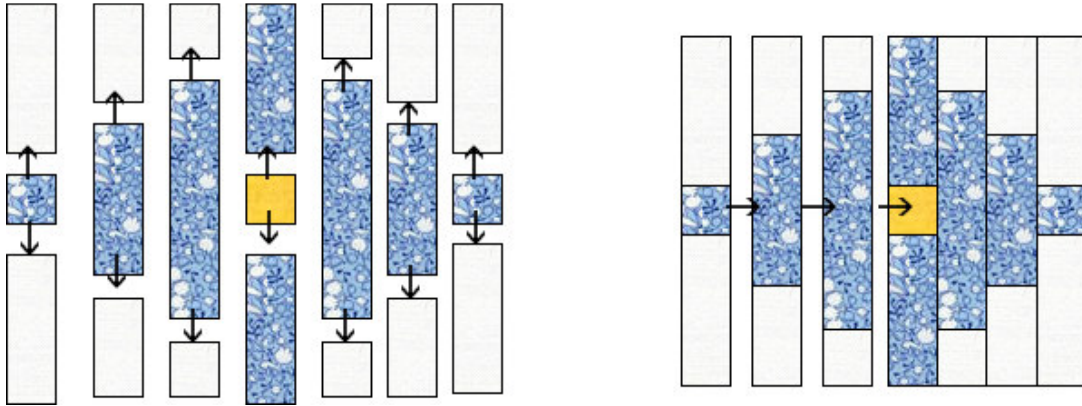
Cut 1 square that is 2 1/2"



Cut 2 squares that are 2 1/2"

On your sewing table lay out your pieces in rows as they are sewn together. Using a 1/4" seam allowance sew your pieces together as shown.

Using a 1/4" seam allowance sew your rows together as shown. Press. Your block should now measure 14 1/2" unfinished



96" by 96" Queen Size

Fabric Requirements

All fabrics are 100% cotton and based on 40" wide fabric

There is a total of 36 blocks in this quilt!

2 Borders each measuring 2" wide

4 1/8 yards of blue floral

4 3/8 yards of Cream or White on White

1/4 solid Kona Yellow Cotton

8 yards muslin backing

3/4 yard Binding of Choice

(Cut 10 strips of binding fabric that is 2 1/2" wide by width of fabric)

King Size Batting

Note: You could make this quilt using a different color in each block, In that case you would get an assortment of fabrics in the 30's and 40's reproductions just make sure it totals 4 1/8 yards. Jelly rolls that are 2 1/2" wide would be good for this project!