



The Golden Thimble

<http://www.thegoldenthimble.com>

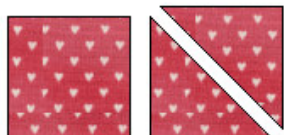


Cornish Hill

12" by 12" Finished Block



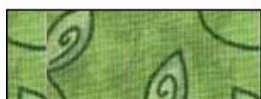
Cut 1 square that is 4 1/2"



Cut 6 squares that are 2 7/8" and then subcut these into 12 triangles



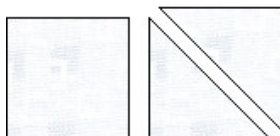
Cut 2 squares that are 2 7/8" and then subcut these into 4 triangles



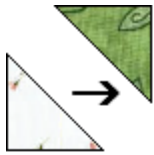
Cut 4 rectangles that are 2 1/2" by 4 1/2"



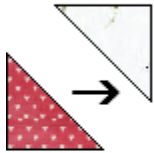
Cut 4 rectangles that are 2 1/2" by 4 1/2"



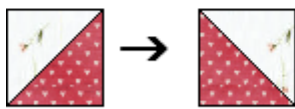
Cut 8 squares that are 2 7/8" and then subcut these into 16 triangles



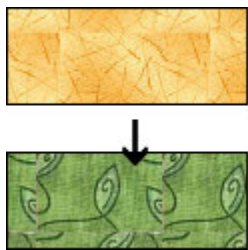
Using a 1/4" seam allowance, sew the green and 4 of the white triangle together to make a total of 4 half square triangles. Press towards the green and set aside.



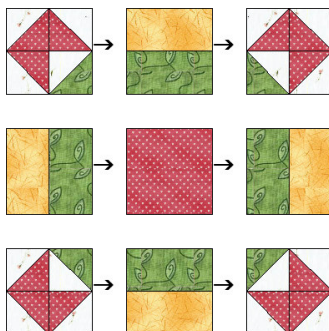
Using a 1/4" seam allowance, sew the red and remainder of the white triangles together to make a total of 12 half square triangles. Press towards the red and set aside.



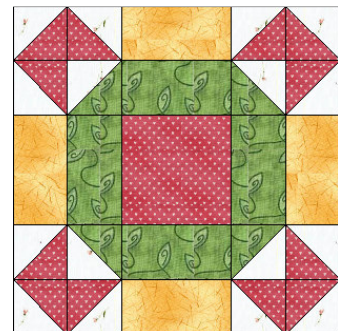
Using a 1/4" seam allowance sew the 4 units together as shown



Using a 1/4" seam allowance, sew the 2 1/2" by 4 1/2" yellow and green rectangles together as shown



Using a 1/4" seam allowance sew the units together to make your block. Your block should measure 12 1/2" unfinished!



Here is how your block would look in a quilt!
This quilt is 72" by 72"
25 Blocks in the Quilt
2 borders that are 1" and 4"
1" finished binding

